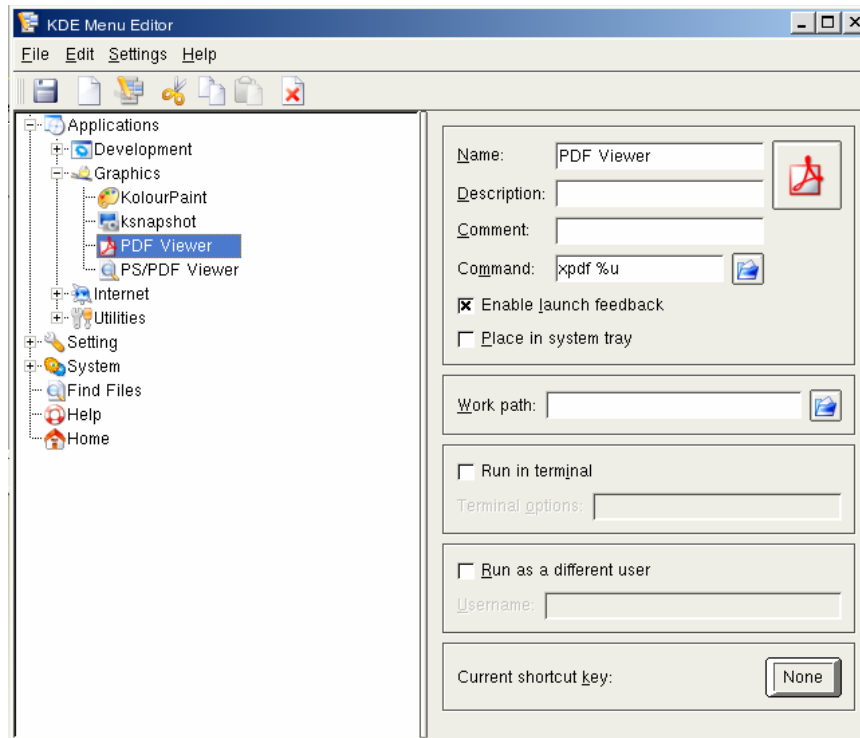


Menu editor

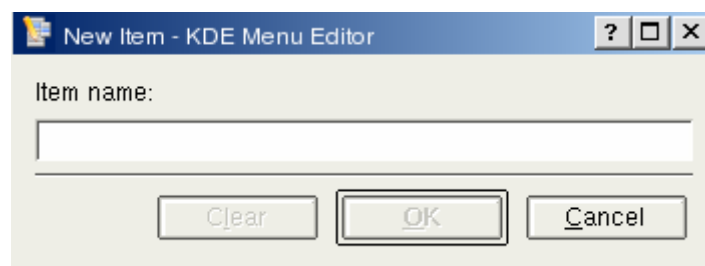
Position: My computer→ctrlpanel→System→KMenuEdit

You can use menu editor to customize system menu. In the below interface, a tree like menu structure is displayed on the left section of the window, and selected menu item information is displayed on the right section.



Menu editor

Click “**New Item**” icon in toolbar and input the name of items that you want to add to system menu on popup window.



Name of New Menu Item

Input the following information in the edit interface of newly added menu item.

Comment: description of menu item to be added;

Command: the command used to run this menu item;

Type: the type of the menu item that added;

Work path: working directory when running applications;

Click the icon button at the right side of “**Work path**” to select icon used for this menu item.

After completion, newly added menu item will be added to system main menu, where you can conveniently start corresponding applications by clicking the item.