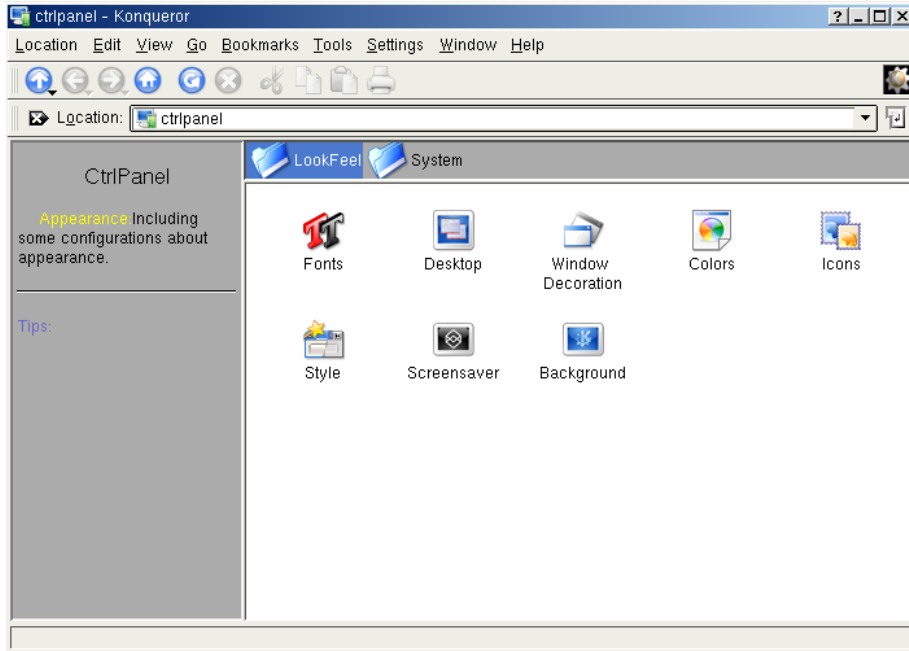


● Look & Feel

In “**LookFeel**” tab on control panel, you can freely set items related to desktop appearance, including Desktop, Fonts, Icons and Window Decoration, etc.



Control Panel - **Look & Feel**

During appearance setup, the following buttons will be frequently used, whose implications are described as follows:

Help: provide help information and description of current operation.

Defaults: use system assigned default configuration.

OK: cause configuration to take effect and shut down configuration tools.

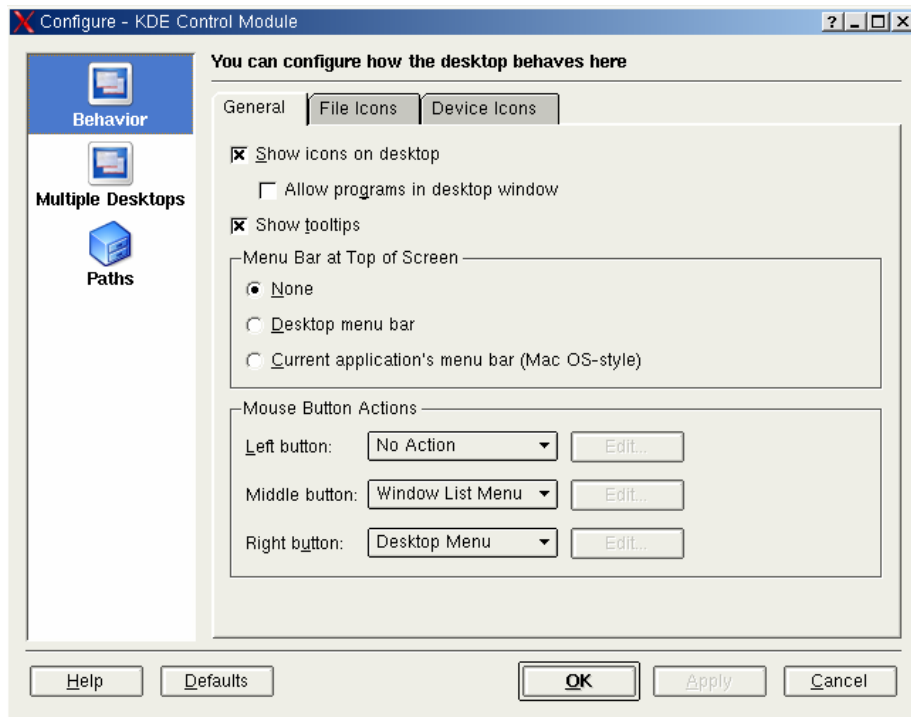
Apply: cause configuration to take effect and keep opened configuration panel for user to perform further configuration.

Cancel: cancel changes made on current configuration.

Customize Desktop

Position: My computer → ctrlpanel → Look & Feel → Desktop

In the “Behavior” label page, you can configure how the desktop behaves here:



Customize task panel

In the “Multiple Desktops” label page, we can configure how many virtual desktops there are.

In the “Paths” label page, we can change the locations of important files.

Screen savers

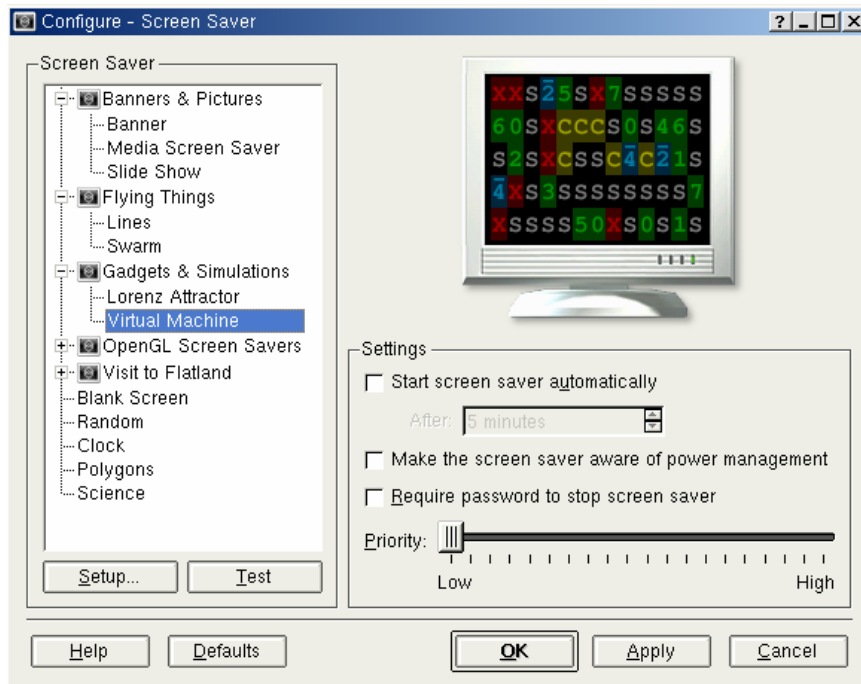
Position: My computer → ctrlpanel → Look & Feel → Screensaver

The below figure is the configuring interface of screen savers. First, select whether to start up screen savers, if you choose “start up screen savers automatically, then select from the list of screen savers on the left of

interface.

Click “Setup” button on the left bottom to adjust the parameter like moving speed of pictures of screen savers that you chose. You can preview the impression on the right of the window.

At the “Setup” part, you can define wait time、 whether it needs to stop screen savers by using password and set PRI. Click “test” button to carry out full screen testing after finishing the configuring.

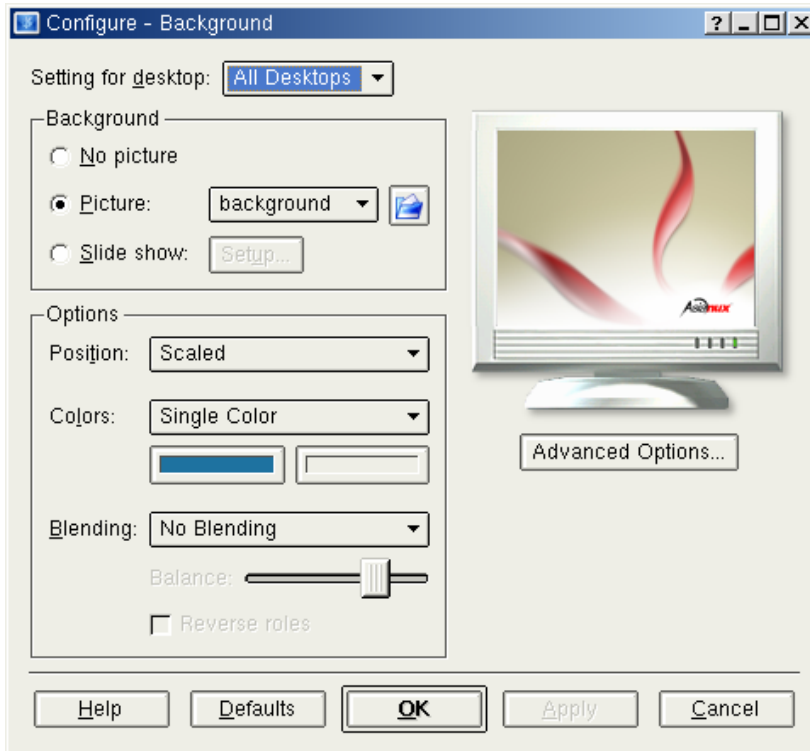


Set screen saver

Customize background of desktop

Position: My computer→ctrlpanel→Look & Feel →Background

You can set different background color and wallpapers for each virtual desktop in the following configuring interface.



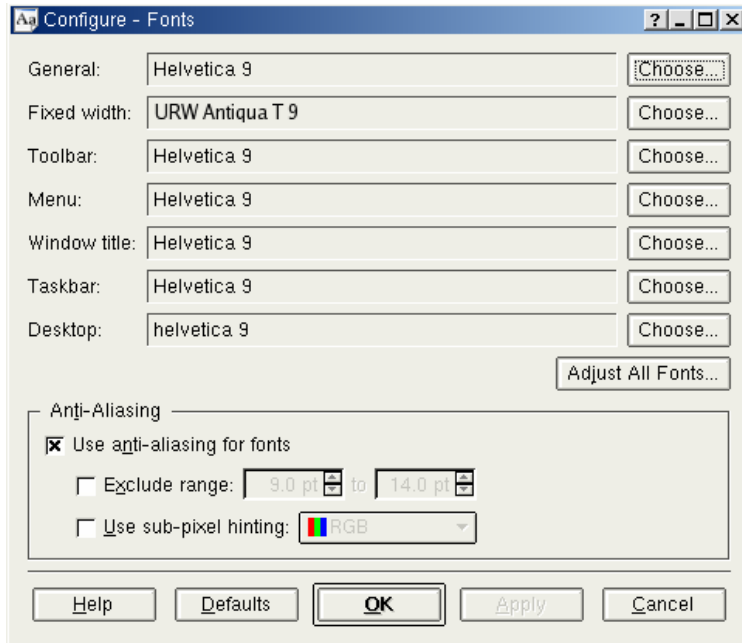
Set desktop background

Set background color and mode in the three label pages: “background”, “Options” and “Advance Options”. Choose wallpaper and its display mode etc. The configuring impression will show in the preview box on the right.

Font setup

Position: My computer → ctrlpanel → Look & Feel → Fonts

You can select and setup font such as the font and style of Menu, Toolbar, etc.



Font Setup

Click “**Choose**” button on the right section of a setting item, and select font type, style and size from pop-up menu.