

# Installation mode of Asianux

Asianux 2.0 supplies many different kinds of installation methods, please choose an appropriate method according to idiographic situation.



*At some situation, for example, we need to install operating system on many computers at the same time, it will be inefficient and hard to maintain thought installing one by one.*

## 1. Hard disk installation

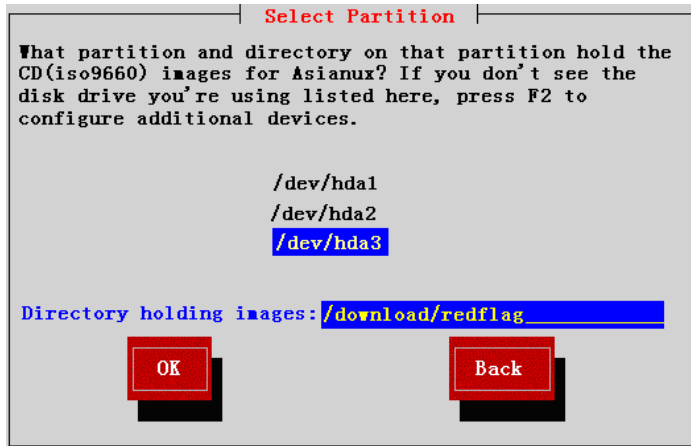
If their does not have the installation CD of Asianux 2.0, you can download or copy the ISO reflection of installation CD to hard disk drive, then carry out hard disk installation.

An installation boot floppy is needed when using hard disk installation; besides, according to the difference of hardware, it may need to make equipment drive disk. Concerning the detailed information of making installation boot disk and drive program disk, please refer to 1.4: Making an installation boot CD-ROM and drive program disk.

Hard disk installation needs to use the ISO reflection file of system installation CD. Before carrying out the installation, put the ISO reflection files of the two CDs of Asianux 2.0 into some place of native hard disk together. Notice: Other .iso files can not be included under this content.

After the successfully booting of installation program, choose “**Hard drive**” in the interface of “**Installation Method**” , then press <enter> to continue.

Next, assign the location for the ISO reflection file of installation program. Refer to the following picture.



Install from hard disk

Assign the name of partition equipment that include the ISO reflection file in “**select Partition**” interface. If the ISO reflection files are under the root content of this partition, it need to input the content route of it in “**Directory holding images**”. For example, ISO reflection is under the /download/redflag of /dev/hda3, you should input: /download/redflag.



*The partitions that save the ISO reflection file must be the ext2、ext3 or FAT format, or it can not carry out hard disk installation.*

## 2. Network installation

Asianux 2.0 supplies three network installation method: NFS、FTP、HTTP. NFS、FTP and HTTP server that network installation used must supply whole installation tree content of Asianux 2.0,that is, all the files of the two CDs must be exist and can be used

If you want to copy the content of the two installation CDs to network installation server, carry out the following steps:

- 1、 According to the first installation CD, carry out the following commands:

```
# mount /dev/cdrom (the first installation CD)
# cp -var /dev/cdrom/* /filelocation (/filelocation means the content that save
installationtree)
# umount /dev/cdrom/
```

- 2、 Copy all the files under the content RedFlag/RPMS of the second installation CD to /filelocation/RedFlag/RPMS

```
# mount /dev/cdrom (the second installation CD)
# cp -var /dev/cdrom/RedFlag/RPMS /* /filelocation/RedFlag/RPMS
# umount /dev/cdrom/
```



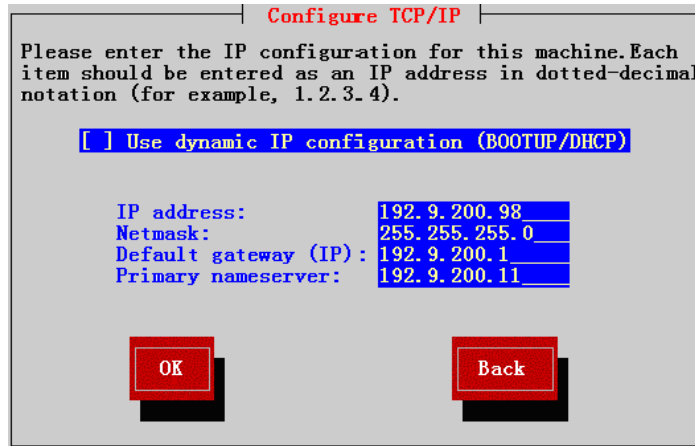
*If the product that you installed is Red Flag DC Server 5, the name of the content that include the content RPMS is not Asianux but RedFlag.*

## 2.1 Configuring TCP/IP

It need an installation boot floppy when carry out network installation; besides, network drive program disk is needed. Concerning the detailed information of making installation boot disk and drive program disk, please refer to 1.4: Making an installation boot CD-ROM and drive program disk.

After successfully booting installation program from floppy, choose which network server to install Asianux 2.0 in the interface “**Installation Method**”, that is, “**NFS image**”, “**FTP**” or “**HTTP**”, and then press <enter> to continue.

Whatever is chosen, it needs to configure the computer’s TCP/IP, the dialog box “**Configure TCP/IP**” appears:



Configuring TCP/IP

The dialog box above id used to ask for the IP dress and other network parameter of the native computer. It can be completed from auto-configuring or hand-configuring thought “**DHCP/BOOTP**” ; if you choose hand-configuring, please input the IP address of the native computer and press <enter>, the installation

program will find “**Netmask**” according to the IP address; if it is incorrect, it can be modified. After pressing <enter>, the installation program will continue to find out the “**Default gateway**” and “**Primary nameserver**” (this can also be modified), and then press “OK” to continue.



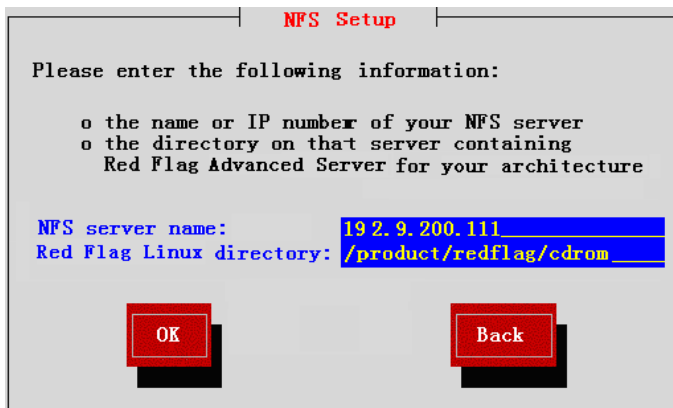
*If you choose DHCP/BOOTP, a running configured DHCP/BOOTP server is required on LAN*

## 2.2 NFS installation

The precondition of NFS installation is that there have an NFS server which can supply installation reflection output of Asianux 2.0 on network. If the administrator needs to configure NFS server that can support installation, please refer to Preparing work of NFS network installation in the addendum A

NFS installation can use ISO reflection files as well as installation tree. Put the ISO reflection files of the two installation CDs of Asianux 2.0 into one content of NFS server together (this content can not include other .iso files), and then let this content to be the content that NFS installation points at.

The following picture is the NFS configuring interface, input the information of NFS server here.



NFS installation

Input the domain name and the IP address of the NFS server in “**NFS server name**”, and input the name of content that include Asianux 2.0 installation tree or installation CD reflection in “**Red Flag Linux directory**” .

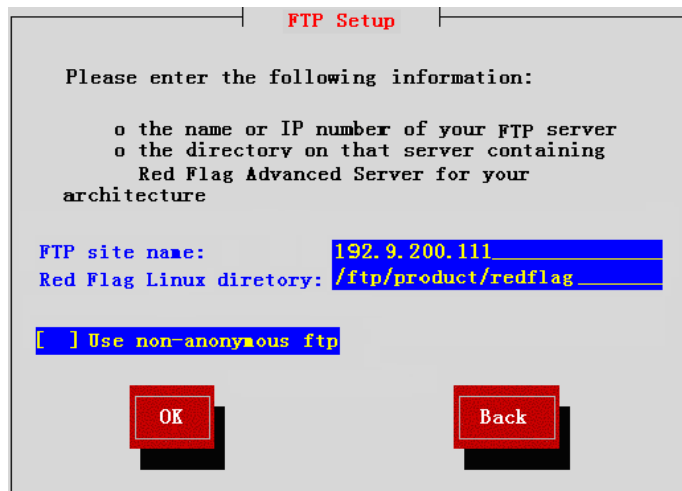
For example, NFS server save the Asianux 2.0 installation tree or installation CD reflection files under the content /product/redflag/cdrom, then input “/product/redflag/cdrom” in “**Red Flag Linux directory**” .

## 2.3 FTP installation

If you choose installation from FTP server, the following FTP configuring dialog box will appear.

Input the name of FTP site and the IP address in “**FTP site name**”, and input the name of content that include Asianux 2.0 installation tree in “**Red Flag Linux directory**”.

For example, FTP server saves Asianux 2.0 installation tree under the content /ftp/product/redflag, then input “/ftp/product/redflag” in “**Red Flag Linux directory**”.



```
FTP Setup

Please enter the following information:

o the name or IP number of your ftp server
o the directory on that server containing
  Red Flag Advanced Server for your
  architecture

FTP site name: 192.9.200.111
Red Flag Linux diretory: /ftp/product/redflag

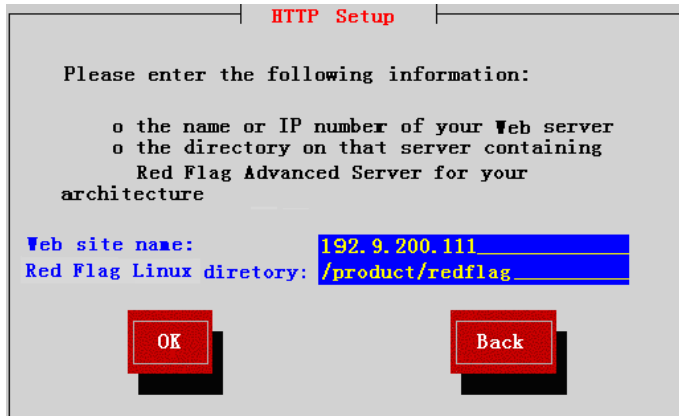
[ ] Use non-anonymous ftp

OK Back
```

FTP installation

## 2.4 HTTP installation

If you choose installation from HTTP server, the following HTTP configuring dialog box will appear:



#### HTTP installation

Input the name of HTTP site and the IP address in “**HTTP site name**” , and input the name of content that include Asianux 2.0 installation tree in “**Red Flag Linux directory**” .

For example, HTTP server saves Asianux 2.0 installation tree under the content /product/redflag, then input “/product/redflag” in “**Red Flag Linux directory**” .