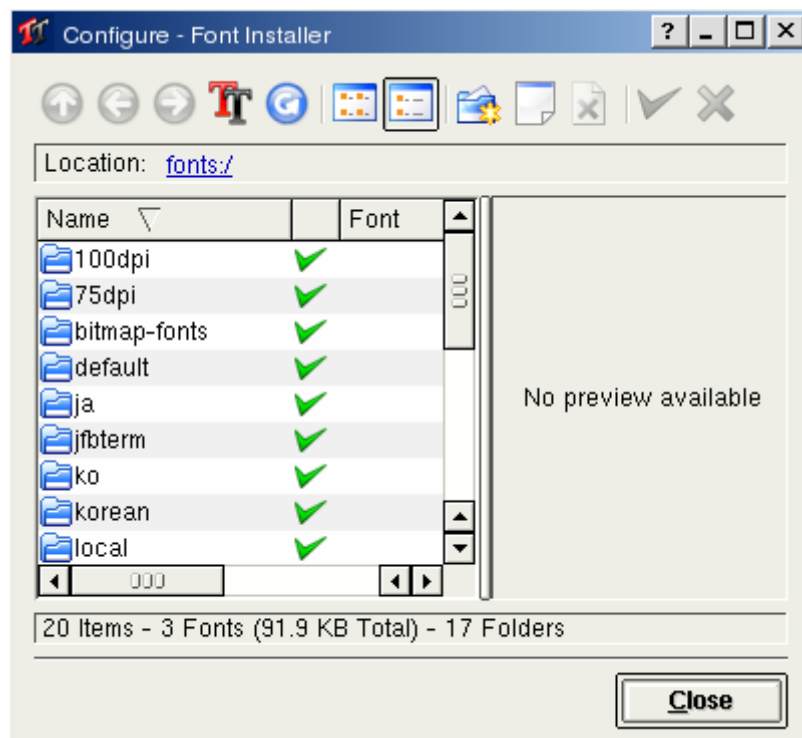


Font installation

Position: My computer → ctrlpanel → System → Font Installer

You can add optional font types such as Type1, TrueType, etc. to the system using font installer. System will automatically identify them provided that you have added *.pfb, *.ttx file to specified Position. Desktop applications will use these fonts automatically. KDE environment also can use these fonts.



Install font

In the above interface, select the font file that you want to install on the left of the window, and make sure the destination address that installed on the right of the window. Click “Add” button, then the font file will be copied to the appointed Position. Click “Apply”, then applications can use these fonts automatically. KDE environment itself can also use.