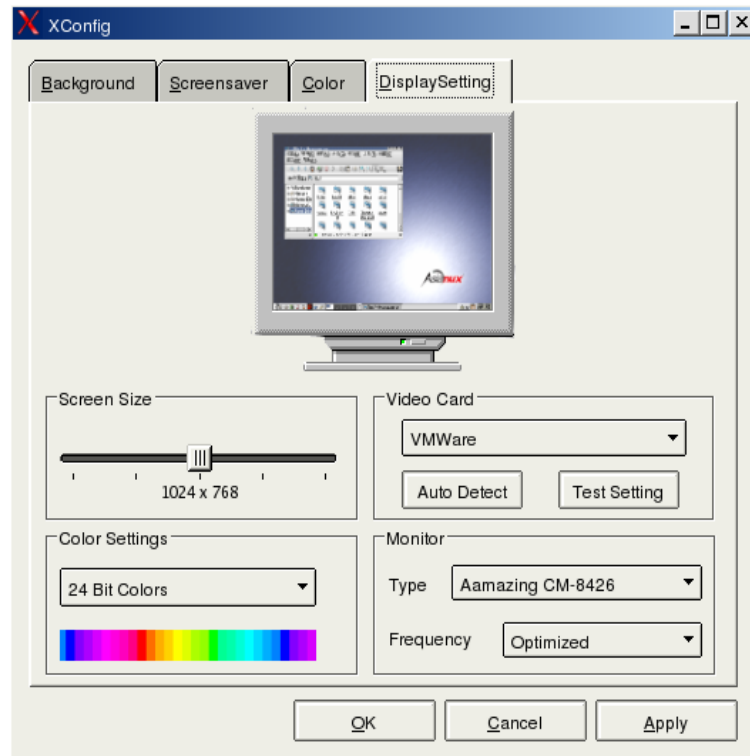


Display Configuration

Position: My computer→ctrlpanel→system→display

The display configuring option is used to inspect and configure the display card and display. The following figure shows the configuring interface.



Display property configuring

The configuring tool will inspect the type of display card and display automatically, and show the results in **Video Card** and **Monitor** text. If the video card is not inspected, it needs to select a close option in below-list by hand or use the first option VESA. Some display do not support the automatically inspection of monitor, this situation, you have to find the type of the monitor yourself.

Configure the distinguishing rate of screen by using glide bar in "Screen Size", range from 640X480 to 1600X1200, the impression will show in display draft on the top of window. You can choose color depth from 256 colors to 24 bits real color in the below-list of "Color Setting" area. The color depth and distinguishing rate of screen depend on the size of display memory. Configure refurbishing frequency of display in "Frequency".

Click "Test Setting" button after completing the configuration. The system will start up a test interface to ask for permission of this configuration, click "Yes" and press "OK" after return, it will work after reboot. If it can not startup the test interface under the selection of user, the system will tell user that it can not work and resume the configuration.



If the display card you use is 810, it is suggested to set distinguishing rate to be 1024X768, because we find that the impression is not gone under 800X600. Additionally, to prevent from blank screen or death, the display card that use i810 as drive can not be tested.